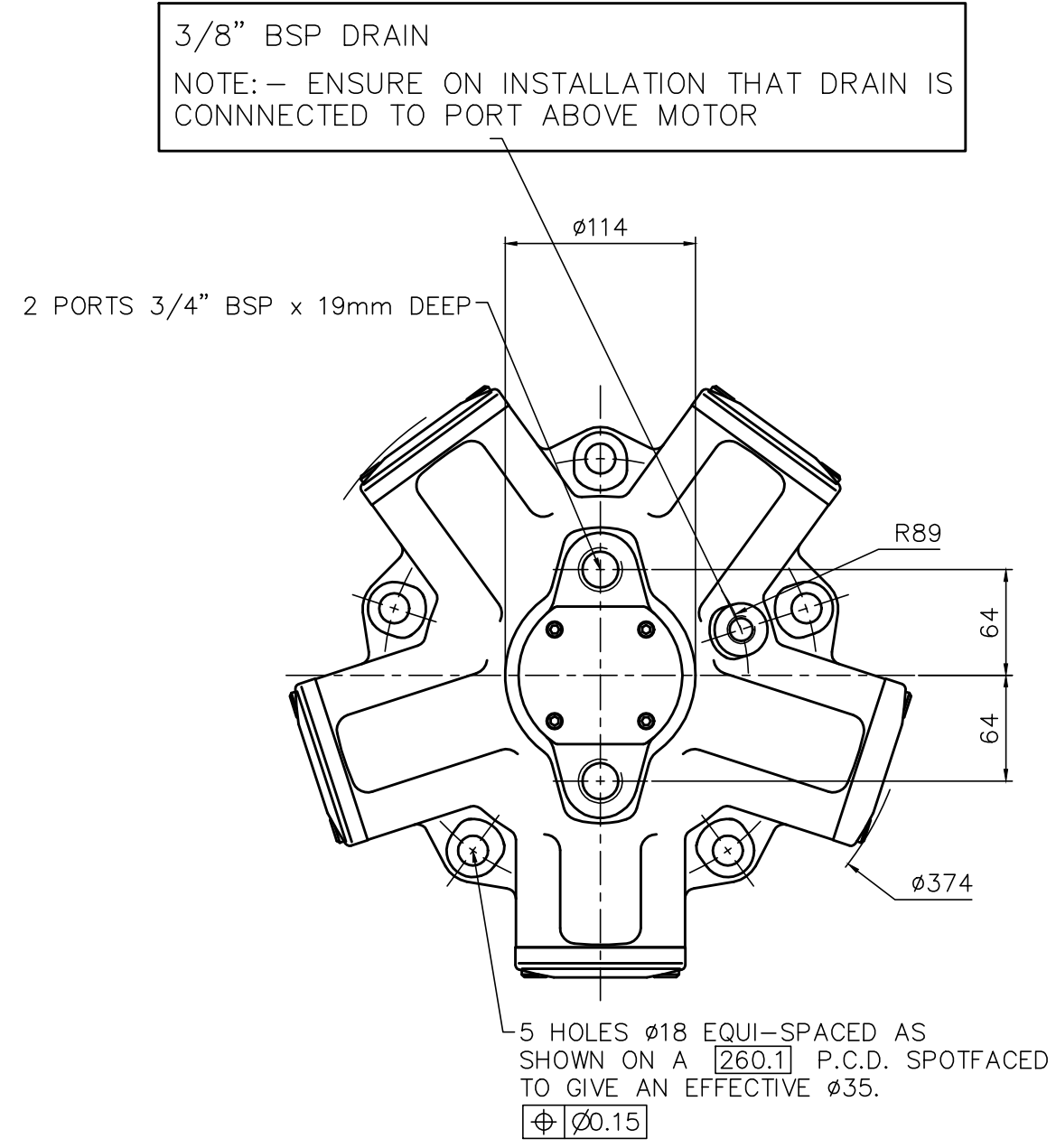


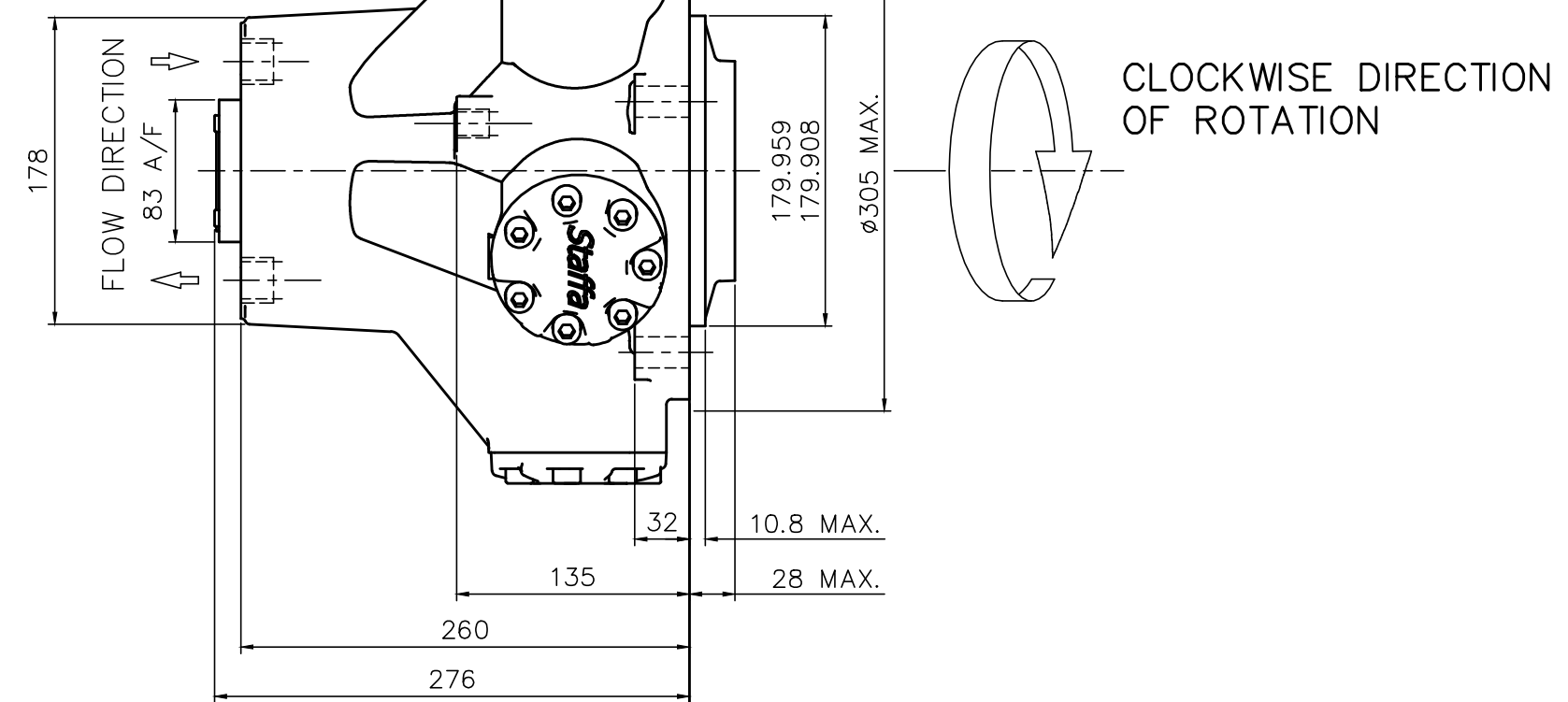
HMB030

EXAMPLE FOR MODEL CODE.

REAR ENTRY MOTORCASE – HMB030/P/21

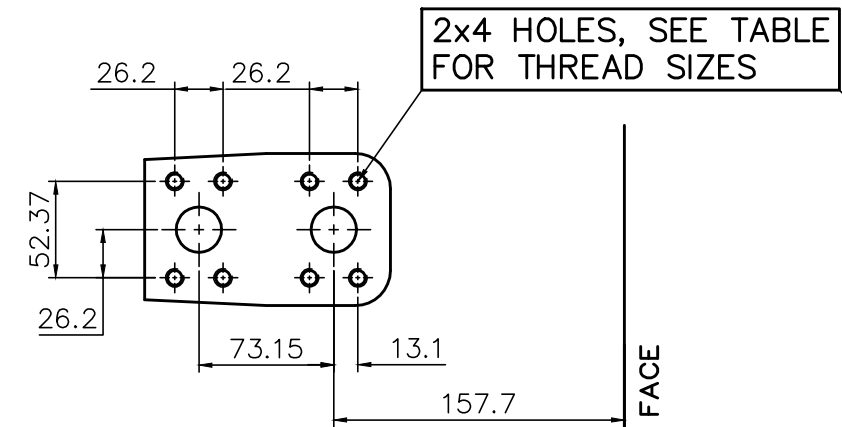
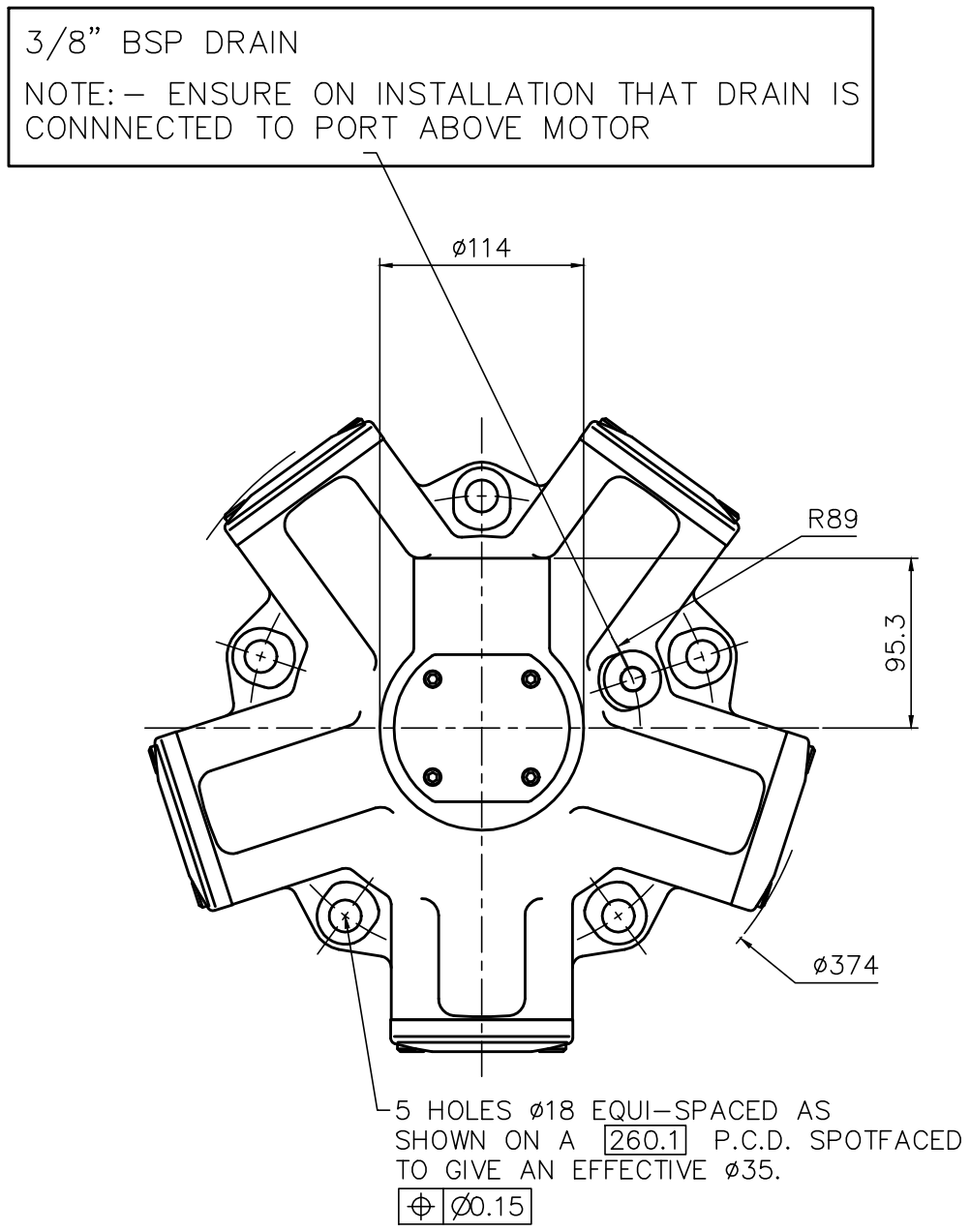


REVERSE PORT CONNECTIONS FOR OPPOSITE DIRECTION OF SHAFT ROTATION



EXAMPLE FOR MODEL CODE.

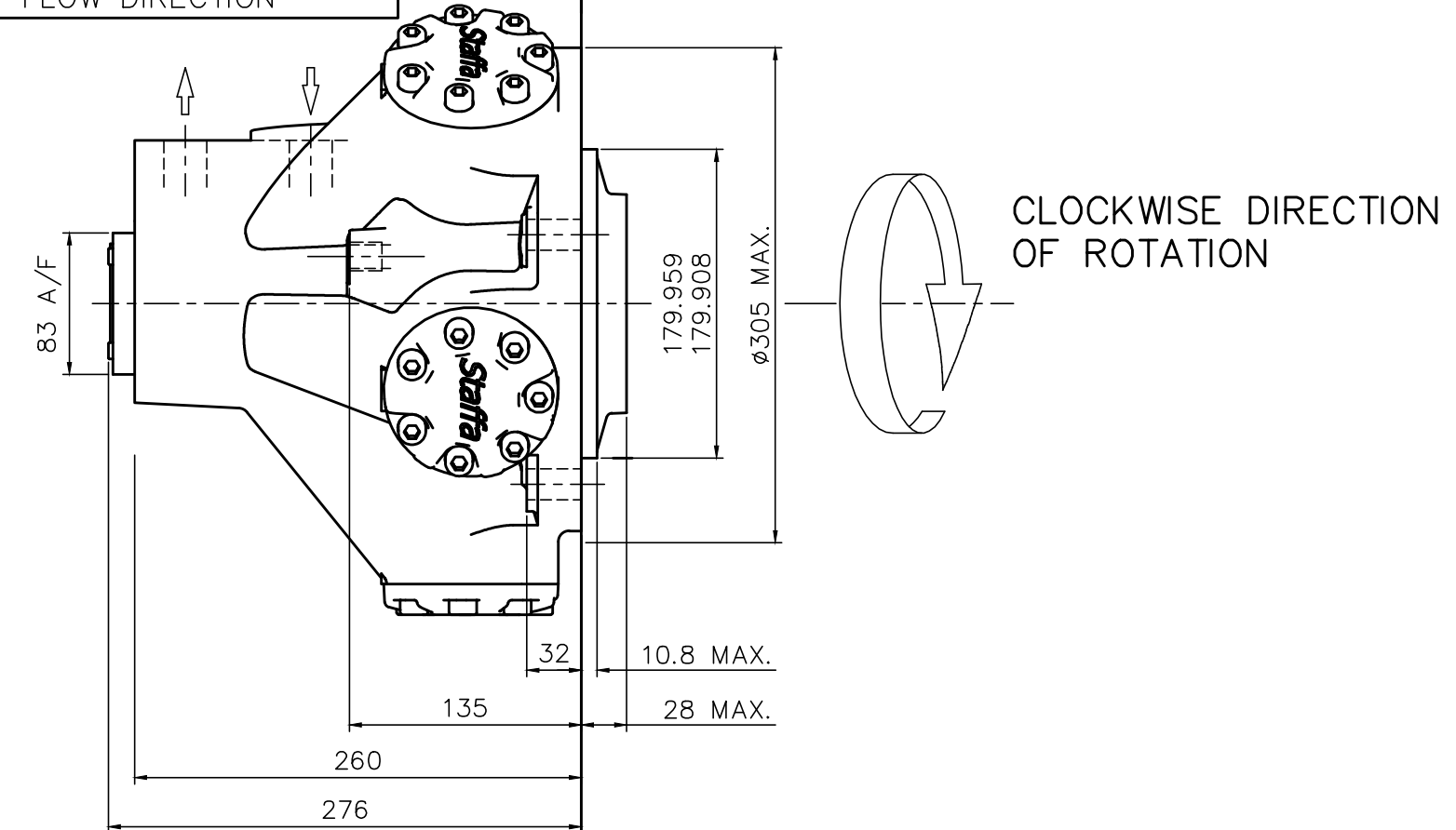
SIDE ENTRY MOTORCASE – HMB030/P/FM/21



2 PORTS $\phi 25$ TO SUIT SAE CODE 61, 1" NOM. SPLIT FLANGE

PORT FLANGE BOLT TAPPING SIZE –
F: 3/8"–16 UNC–2B X 16 FULL THREAD DEPTH
FM: M10 X P1.5 X 16 FULL THREAD DEPTH

REVERSE PORT CONNECTIONS FOR OPPOSITE DIRECTION OF SHAFT ROTATION

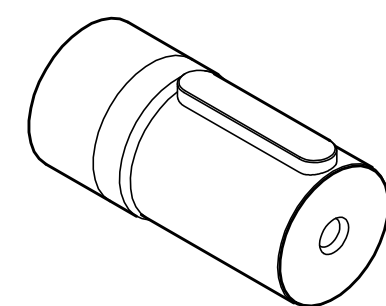
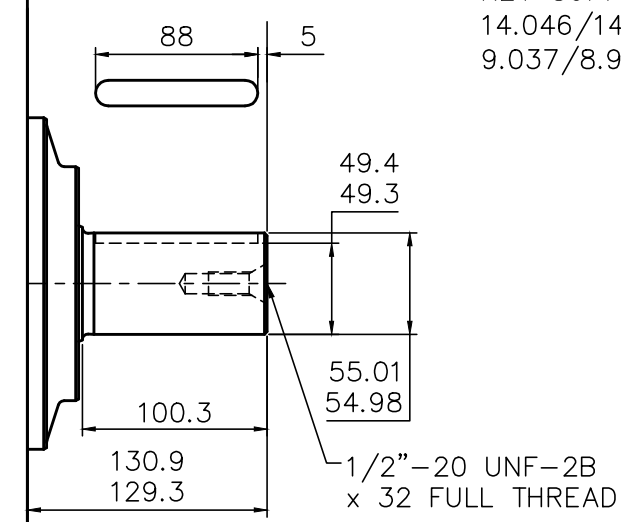


SHAFTS

EXAMPLE FOR MODEL CODE –
HMB030/P/21

KEY SUPPLIED –
14.046/14.028 WIDE
9.037/8.961 THICK

'P'



SPLINE DATA

'S'
TO BS 3550 (ANSI B92.1 CLASS 5)
FLAT ROOT SIDE FIT, CLASS 1
PRESSURE ANGLE 30°
NUMBER OF TEETH 17
PITCH 8/16
MAJOR DIAMETER 56.41/56.28
FORM DIAMETER 50.703
MINOR DIAMETER 50.07/49.60
PIN DIAMETER 6.096
DIAMETER OVER PINS 62.985/62.931

'Z'
DIN 5480, W55 X 3 X 17 X 7h

'S' & 'Z'

