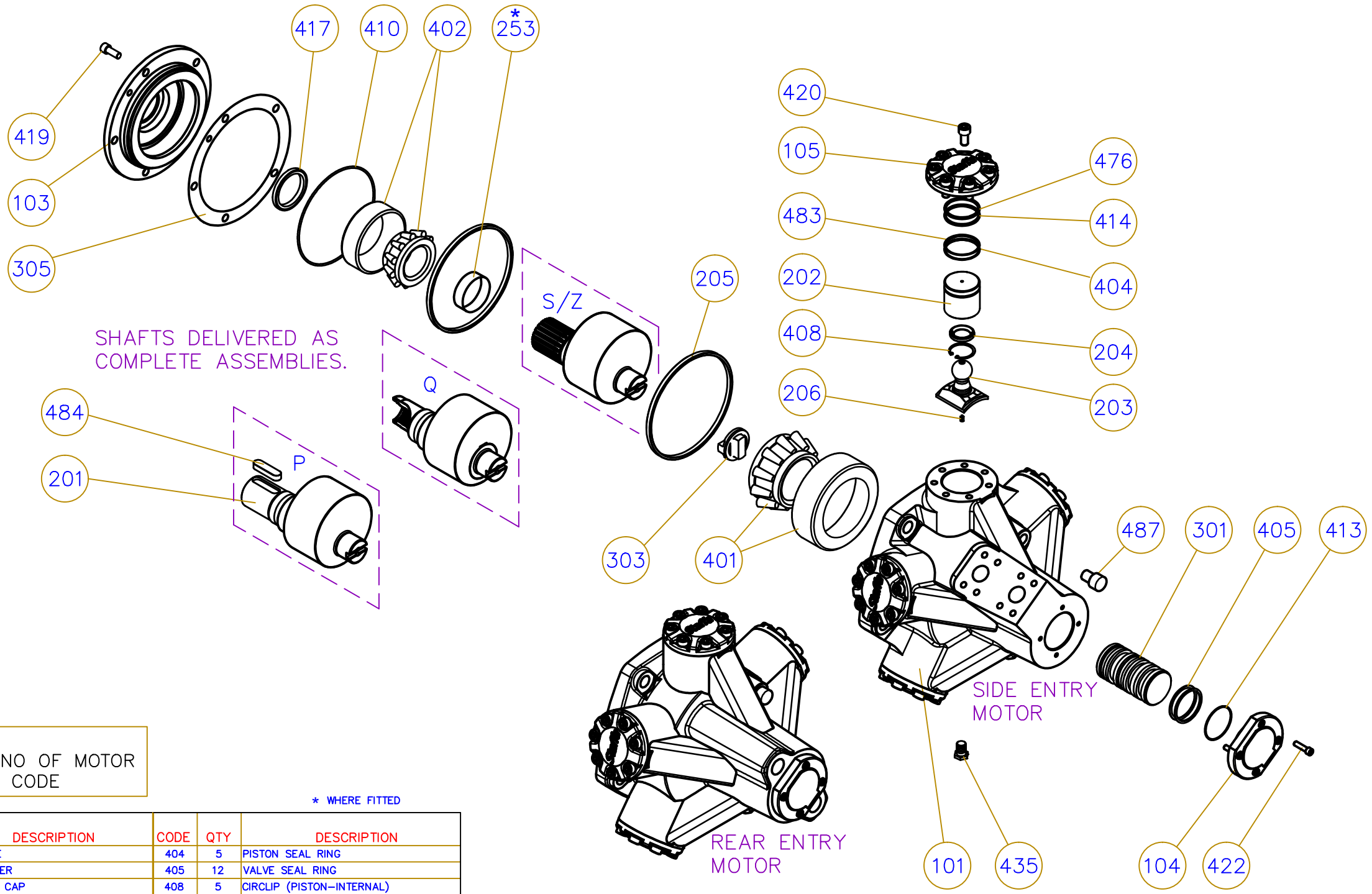


DRAWING No. 016472

ISSUE	CHANGE	DATE	CHK
A		01.09	FS
B		01.12	FS



SPARES :
QUOTE SERIAL NO OF MOTOR
+ FULL MODEL CODE

* WHERE FITTED

CODE	QTY	DESCRIPTION	CODE	QTY	DESCRIPTION
101	1	MOTORCASE	404	5	PISTON SEAL RING
103	1	FRONT COVER	405	12	VALVE SEAL RING
104	1	VALVE END CAP	408	5	CIRCLIP (PISTON-INTERNAL)
105	5	CYLINDER HEAD	410	1	O-RING (FRONT COVER)
201	1	CRANKSHAFT	413	1	O-RING (VALVE END CAP)
202	5	PISTON	414	5	O-RING (CYLINDER HEAD)
203	5	CON-ROD	417	1	SHAFT SEAL
204	10	PISTON RETAINING HALF RING	419	5	S.H.C.S. (FRONT COVER)
205	2	CON-ROD RETAINING RING	420	35	S.H.C.S. (CYLINDER END CAP)
206	5	RESTRICTOR SCREW	422	4	S.H.C.S. (VALVE END CAP)
253 *	1	SHAFT SLEEVE	435	1	DRAIN PLUG
301	1	VALVE SPOOL	476	5	BACK-UP RING (CYLINDER END CAP)
303	1	OLDHAMS COUPLING	483	5	PISTON SEAL BACKING RING
305	-	SHIM (STEEL)	484	1	CUSTOMER KEY
401	1	REAR BEARING	487	1	PLASTIC PLUG
402	1	FRONT BEARING			

THIRD ANGLE PROJECTION	NAME	DATE	 <small>Emmett, Plymouth PL5 2SA www.kpm-eu.com</small>
	DR. M.NORMAN	07.01.09	
	CHK. F.STANTON	01.09	TITLE GENERAL ASSEMBLY (FOR SPARES) HMB030 MOTOR
	ENGR. APPL. F.STANTON	01.09	
	WT. F.STANTON	01.09	SIZE A1 SCALE NTS DRAWING No. 016472 SHEET 1 of 1
<small>ALL TECHNICAL DATA DISCLOSED HEREIN IS THE PROPERTY OF KPM/STAFFA AND SHALL NOT BE USED BY OTHERS FOR MANUFACTURE, PROCUREMENT OR DISCLOSURE WITHOUT THE WRITTEN PERMISSION OF THE OWNER.</small>			